

Parent Information Booklet



PARENTS INFORMATION BOOKLET

The Parent's Information Booklet is being provided in order for you, the parent, to have as much information as possible and at the same time answer commonly asked questions that you may have. It contains information that is necessary for you to know, not only for registration, but to start the season with as few difficulties as possible.

Please take the time to read this booklet and keep for your use. I'm sure that you will find the information in it to be beneficial to you and your child.

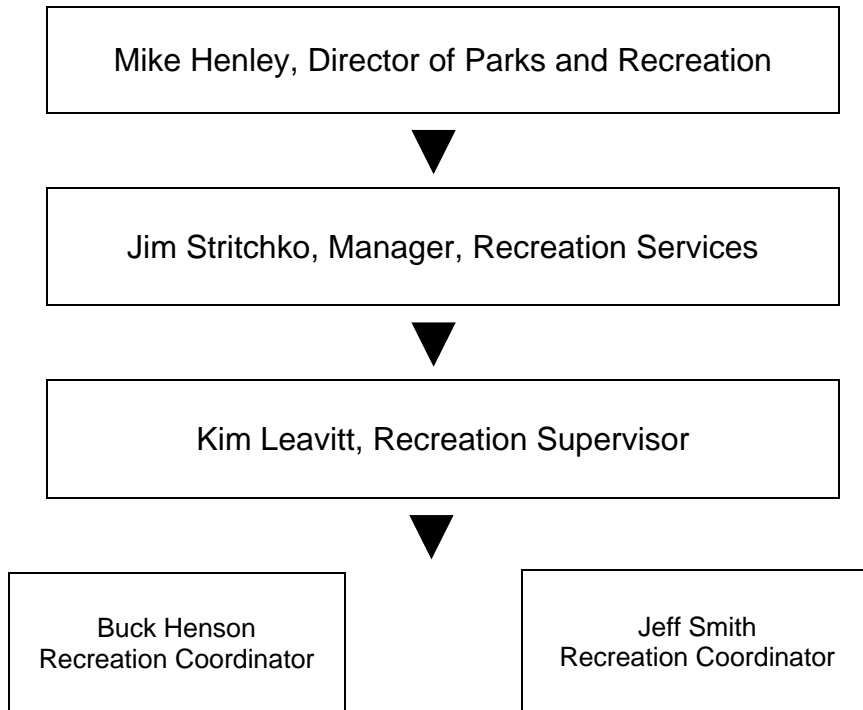
We would like this to be an ever changing booklet. Therefore, if you think of a question or a concern that is not included, please let us know. You can call Buck Henson or Jeff Smith, Recreation Coordinators, at 633-2558 or send an e-mail to sports@cityofnorthlasvegas.com with your questions and comments.

The City of North Las Vegas Parks and Recreation Department endeavors to provide quality recreational experiences for your child. We would like the memories that both you and your family experience with us to be those, that in years to come, you will look back on with fondness.

CONTENTS

City of North Las Vegas Parks and Recreation Department, Sport Section
Organizational Chart
Important Parks and Recreation Department Phone Numbers
Refund Policy
Website
Rain/Inclement Weather/Lightning
Team Mom/Dad
Accident Insurance
Smoking/Drug/Alcohol Policy
Photo Information
Facility Supervisors
Tips On Becoming A Model Youth Sports Parent
Jewelry
Animals/Pets At Facilities
Awards
Additions/Deletions To Teams
Not Playing A Player
Player/Coach Ejection
Parent/Spectator Removal From Facility
If The Shoe Fits
Information On Your Coach

NLVPRD Organization Chart



IMPORTANT PHONE NUMBERS

| | |
|------------------------|----------|
| Sports Office | 633-2558 |
| Silver Mesa Rec Center | 633-2550 |
| Emergency | 911 |

If calling 911 for an emergency within our City, you must first say you are in the City of North Las Vegas.

REFUND POLICY

A \$10 processing fee will be charged for each participant's request for refund. Requests for refunds made prior to the first game of the season will not include a \$10 processing fee. Refunds made after the first game of the season will be assessed a \$10 processing fee. Requests must be made by the parent or guardian of the child. No refunds will be given following the 3rd week of games for any reason.

WEBSITE

You may also check the website at www.cityofnorthlasvegas.com for more league information. Please navigate to the Parks and Recreation page, and click Sports Leagues.

RAIN/ INCLEMENT WEATHER/ LIGHTNING

Please call the Sports Office at 633-2558 **after** 4:30pm to get an up-date on the playing status of games when inclement weather exists. The City of North Las Vegas Parks and Recreation Department and game officials will determine if a game is rained out. **However, a good rule of thumb is "when in doubt, dress out."**

Lightning is the most consistent and significant weather hazard that may affect outdoor activities. We have developed procedures to help insure the safety of participants and spectators. When a game or practice is suspended due to lightning, there are procedures in place that must be followed in order to resume play. The City of North Las Vegas Parks and Recreation Department staff are aware of these procedures.

TEAM MOM/DAD

Many coaches have found it to be advantageous to have a team mom or team dad volunteer to help with the team in other ways besides coaching. Your coach is a volunteer and like many of us probably has limited time to devote to coaching. It is a great benefit to have a team mom or team dad assist with some of the responsibilities such as keeping the other parents informed and updated with information about games and practices, help out with the organization of who is providing refreshments at the end of each game, organizing car pooling with the other parents to help with transporting the players and helping to make phone calls to team members in case of a change in the game or practice schedule. Even if you know absolutely nothing about the rules of the game, there are ways that you can help us and your coach provide your child with an enjoyable experience. Ask your coach if you can help in any way, you may be surprised at the answer.

ACCIDENT INSURANCE

The City of North Las Vegas Parks and Recreation Department does not provide accident insurance for the participants. Any injuries that result from playing in our programs are the responsibility of the participants/parents.

SMOKING/DRUG/ALCOHOL POLICY

There is no smoking or use of any type of tobacco, drugs or alcohol products permitted by coaches, players, game officials, staff or referees/umpires while at practices or games. This also applies to all spectators in bleachers, near the playing area or inside any City of North Las Vegas Parks and Recreation Department building. Offenders may be asked to leave the facility.

PHOTO INFORMATION

Currently, all photography services for City of North Las Vegas Parks and Recreation Department activities are provided by various companies. Your coach will be provided with the list of companies that have supplied the City information, and the coach will determine the location and time of the pictures. The City is not responsible for refunds or any transactions between the parent and the photo company.

PROGRAM SUPERVISORS

The City of North Las Vegas Parks and Recreation Department assigns staff members at each site during games. These Program Supervisors are identifiable by a t-shirt or sweatshirt with the City logo on the front and STAFF on the back. They represent the City of North Las Vegas Parks and Recreation Department and as such, represent the final authority for each situation not handled by the referee or Coordinator. They are also in charge of the facility and are responsible for the enforcement of our rules and regulations at the sites. There will be times, however, that one Program Supervisor will be assigned to more than one site and will be rotating between sites.

If you have any concerns, suggestions or information, please tell them. They have a Complaint Form available for you to fill out and will pass it on to their Supervisor.

TIPS ON BECOMING A MODEL YOUTH SPORT PARENT

The majority of today's youth sports parents are a supportive and caring group, but there is an increasing number who are disrupting youth sports with their negative words and out of control behavior. These less than sportsman-like actions have emerged as a rapidly growing phenomenon on America's playing fields. What parents must remember is that youth sports are for the children and not the adults.

1. Remember that where we practice and play games is like your child's classroom – respect the classroom.
2. Make only positive, encouraging comments to the players on both teams.
3. Remember, making mistakes is part of the learning process – don't criticize.
4. Discuss your concern with the coach away from the players and, in particular, away from your child.
5. Respect the staff and officials.
6. Focus on fun and participation rather than winning and losing.
7. Ask your child if they had fun. Then ask why or why not?
8. Control your emotions.
9. Get interested in your child's sports/activities.
10. Learn the rules of your child's sport.
11. Make every effort to get your child to games and practices on time.
12. Let the coach know if your child will be missing practice or a game.
13. Reinforce the coach's instruction when practicing with your child at home.
14. Remember, positive reinforcement is the key to improvement.
15. Don't undermine team morale.
16. Refrain from tobacco or alcohol use at all youth sports events.
17. Participate in team activities.
18. Refrain from shouting instructions from the bleachers or sidelines.
19. Abide by all the league rules and bylaws.

JEWELRY

Jewelry such as, but not limited to, rings, earrings, bracelets, etc., is not allowed and must be removed prior to playing in practices or games. Game officials will be more than happy to tell you before the game what will and will not be allowed. When in doubt, ask an official and/or a facility supervisor.

ANIMALS/PETS AT FACILITIES

Pets are not allowed on any athletic ball field or gymnasium at any time. Violators will be asked to leave. Due to the number of small children and the excitement surrounding practices and games, we strongly recommend that you do not bring the family pet, regardless of size and temperament of the pet, to games or practices.

AWARDS

All participants in our Recreational Basketball or Recreational Soccer programs will receive participation trophies. In the Competitive Leagues, regular season team trophies will be given for the champion and runner-up. Individual trophies will also be given to the regular season champions.

ADDITIONS/DELETIONS TO TEAMS

All deletions and additions to the recreational team rosters will be made by the Sports Office, not by coaches or parents. Any coach who adds or removes players will be suspended from coaching. No trades will be allowed. Players cannot participate unless registered with the City of North Las Vegas Parks and Recreation Department.

NOT PLAYING A PLAYER

A coach may hold a player out of the game for the following reasons only: injury, sickness or disciplinary actions. The coach must notify the Program Supervisor before the game begins and make a note on the line-up card if any players that are dressed out to play will not be playing or not meeting the minimum playing requirements. There are NO playing restrictions in the competitive league. Coaches determine the playing time of their teams based on their own criteria.

PLAYER/COACH EJECTION

Any player or coach ejected from a game by the game official must leave the area immediately or the game may be forfeited. Any player or coach that is ejected will automatically be suspended for the next game. The Recreation Coordinator will determine if further action is necessary.

PARENT/SPECTATOR REMOVAL FROM FACILITY

Any parent or spectator who repeatedly violates the City of North Las Vegas Parks and Recreation Department policies at the sites or during games/practices may be asked to leave the facility. The Recreation Coordinator will determine if further action is necessary.

IF THE SHOE FITS . . .

*Please don't curse that boy down there
He is my son you see,
He's only just a boy you know
He means the world to me.
I didn't raise my son, dear fan
for you to call him names.
He may not be a superstar,
it's just a recreation game.
So please don't curse those boys
down there, they do the best they can.
They never tried to lose a game
They're boys and you're a man.
This game belongs to them, you see,
you're really just a guest.
They don't need a fan like you,
they need the very best.
If you have nothing nice to say,
please leave the boys alone.
And if you have no manners,
why don't you stay at home!
So please don't curse those boys
down there, each one's his parents' son,
and win or lose or tie, you see,
To us, they're NUMBER ONE*

- anonymous

INFORMATION ON YOUR COACH

NAME: _____

PHONE NUMBERS:

HOME: _____

WORK: _____ **CELL:** _____

ADDRESS: _____

EMAIL: _____

Thank you for your cooperation and have a great season!